

# Ota City, Tokyo, Japan can do this.

Meet reliable manufacturers and  
processors you need in Ota City

Proven diverse technologies that create a new future  
for "Monozukuri" (Japanese manufacturing)

YES, WE CAN DO.

# Ota City where state-of-the-art technology developed to pave the way

Located in the southern part of Tokyo and home to Tokyo International Airport (Haneda Airport), Ota City serves as a key manufacturing base where a large number of small-to-medium-sized enterprises boasting the world's top-class technologies are congregated. In particular, these companies excel in manufacturing of precision parts and components, prototype production, high-mix and low-volume manufacturing, and the expert handling of hard-to-process materials, which have long enabled them to contribute to the success of manufacturing sector of Japan. Such technological strengths have been drawing attention from all over the world, providing Ota's companies opportunities to respond to a wide variety of requests and work with them in development of products.

Companies in Ota City will continue to be key players in driving innovation on a global scale with their outstanding problem-solving capabilities, which is supported by their exceptional technologies.

## Wide variety

High agility and flexibility of SMEs make high-mix manufacturing possible to meet a broad range of needs.

## Network

Ota's "network" is highly developed, taking advantage of the unique features of the city, the clustering of factories that promotes mutual support in winning orders among the neighboring companies.

## Processing of hard-to-process materials

Working hard day and night without compromise to improve technological capabilities, businesses in Ota City make most of their accumulated expertise to push the envelope of high-tech materials processing.

## Large-volume production

Besides the main factories located in Ota City, many Ota companies have branch factories that are in operation outside Tokyo and overseas to support large-volume production through integrated systems of manufacturing.



# Smart technologies are for the future.

## About the Companies of Ota City



### ONLY OTA QUALITY

Ota City is a concentrated industrial area in Tokyo, Japan. Supporting industry, the companies of Ota City provide advanced technologies to such fields as electronics and automotive manufacturing.

Most of Ota's companies are SMEs and they manufacture a variety of cutting edge products and components using the infrastructure and business networks in Ota City to provide you with short lead-times. The quality "Ota Brand" supports not only Japanese industries but also global needs for high-tech support, R & D, and mass-production.



## Meet the Companies of Ota City

### TRADE FAIRS THROUGHOUT THE WORLD

Ota City participates in trade fairs outside Japan jointly with companies of Ota City in order to find new business partners. Recently, we have participated in exhibitions in China, Thailand, Vietnam and Germany. Many of participants have markets and production bases in such cities throughout the globe in order to meet diversified needs of global markets. We are looking forward to your visiting the Ota City booth.



### BUSINESS MATCHING MEETINGS

Meetings for matching up businesses are held at the Ota City Industrial Plaza (PIO), Tokyo, every year. If you need outstanding technologies or wish to carry out technology exchange, please send your inquiries to us.

## Collaborate with the companies of Ota city

### Expanding the Network

Driven by the trend of shifting manufacturing to China and ASEAN countries by major Japanese companies, Ota's companies have also expanded their operation into those markets to be a part of the supply chain that supports large-volume production in Asia. Based on the view that Asia is no longer just a manufacturing hub, but also a potential market, further efforts are being made to increase transactions with local Asian companies.

In addition, companies in Ota City have started to work with partners in mature markets in US and Europe, where added-value products or cutting-edge technologies of Ota's companies are highly appreciated and high-quality, high-mix and low-volume manufacturing is required. Priority will be placed in strengthening collaboration with partners in those mature markets, which will, in return help Ota's companies maintain and enhance their technological capability.



**For inquiries about Ota City and its companies,  
please contact : [kaigai@pio-ota.jp](mailto:kaigai@pio-ota.jp)**

# Processing

## Reliable technological skills and capabilities to make innovative proposals

Ota City, where small but the world's foremost companies are concentrated.

The city boasts unparalleled reputation and diverse expertise accumulated over a long time as it serves as the heart of the Keihin industrial area.

Never being complacent with their past achievements, companies in Ota City devote themselves to enhancing their technological capabilities to meet a wide range of company needs with next-level processing technologies and value-added proposals.

**Plastic Products Manufacturing** ● plastic plates, plastic rods, plastic pipes and tubes, plastic fittings, extruded plastic products ● plastic film, plastic sheeting, plastic flooring material, synthetic leather ● industrial plastic products ● foaming plastic and reinforced plastic products ● plastic molding material (including waste and recycled plastic) ● other plastic products

**Rubber Products Manufacturing** ● rubber belts, rubber hoses, industrial rubber products ● other rubber products

**Ceramic and Building Materials Manufacturing** ● glass and glass products ● cement and cement products ● clay products for construction (excluding ceramic ware) ● ceramic ware and related products ● refractories ● carbon and graphite products ● abrasant and abrasant products ● aggregate and masonry products ● other ceramic and building products

**Steel Industry** ● steel materials without steelmaking processes (excluding surface-treated steel) ● iron casting and forging products ● other steel industries

**Non-ferrous Metals Manufacturing** ● secondary refining and refining of non-ferrous metal alloys (including non-ferrous metal alloy manufacturing) ● rolling of non-ferrous metals and non-ferrous metal alloys (including drawing and extruding) ● electric wire and cable ● non-ferrous metal casting ● other non-ferrous metals

**Metal Products Manufacturing** ● construction and building products (including sheet metal for plate working) ● metal casting and forging products ● metal coating and carving, heat treatment (excluding enameled iron products) ● metal wire products (excluding screws) ● bolts, nuts, rivets, small screws, wood screws and similar products ● other metal products

**General-Purpose Machinery Manufacturing** ● other general-purpose machinery and parts

**Production-Oriented Machinery Manufacturing** ● other production-oriented machinery and parts

**Business-Oriented Machinery Manufacturing** ● optical appliances, instruments and lenses

**Transport Equipment Manufacturing** ● motor vehicles and motor vehicle accessories ● rolling stock and rolling stock parts ● ship building and repair, ship engines ● aircraft and aircraft accessories ● industrial transportation vehicles, parts and accessories ● other transportation machinery

**Other Manufacturing** ● precious metals and jewelry

## 55% Processing Industry

Plastic Products Manufacturing	13.2%
Rubber Products Manufacturing	0.9%
Ceramic and Building Materials Manufacturing	1.5%
Steel Industry	4.4%
Non-ferrous Metals Manufacturing	4.6%
Metal Products Manufacturing	39.4%
General-Purpose Machinery Manufacturing	8.7%
Production-Oriented Machinery Manufacturing	13.6%
Business-Oriented Machinery Manufacturing	1.9%
Transport Equipment Manufacturing	11.4%
Other Manufacturing	0.4%







## 1 Spin-forming of Large Parabolic Antenna

Spin a round metal plate on a lathe to form it against a mandrel-mold with a spoon-bar held by hand.

## 2 Coating to various raw materials

Diamond-type film coating to glass resin, rubber, or metal by using the PVD/CVD method

## 3 High purity aluminum die-cast heat sinks

Formed with pure aluminum which has a high thermal conductivity (210 W/m/k), these die-cast methods have superior flexibility in handling complex shapes.

## 4 Ceramic Screws (Alumina Zirconium)

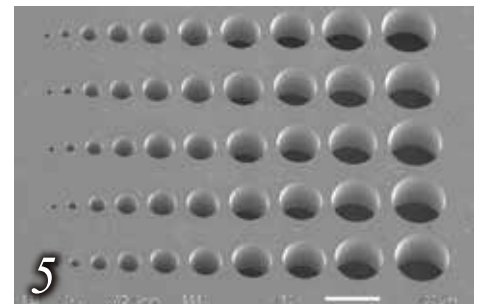
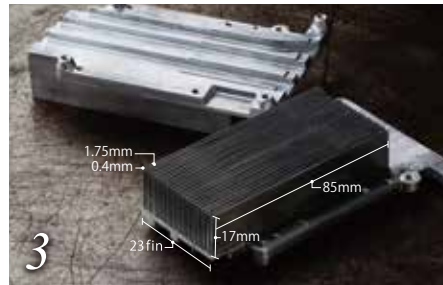
Manufacturing more than 900 kinds of screws and sell them worldwide (developed in-house)

## 5 Fine cutting

Ultrafine hole processing from 10μm to 100μm in SUS304 with a drill.

## 6 High-precision Fine Pins

One of high-precision molded parts that boasts unrivaled quality and accuracy.



# Pushing the envelope of manufacturing with exceptional advanced technologies

## Advanced processing technologies

For further growth and development  
To ensure the world's highest quality  
Always looking ahead to the future, Ota's companies  
make most of their "network" to make impossible possible  
in processing.



# Products

## Creativity and ability to practically apply cutting-edge-technologies in the most optimal way in manufacturing of products

Companies of Ota City boast competitive edge in basic technologies.

In particular they excel in manufacturing of intermediate goods or producer goods, such as molds or machinery parts.

With outstanding creativity to develop in untapped fields, Ota's companies continue to pursue innovative manufacturing to support all sorts of industries around the world.

**Chemical Products** ●chemical fertilizer ●inorganic industrial chemical products ●organic industrial chemical products ●processed oil and fat products, soap, synthetic detergent, surface-active agent, and paint ●medical supplies ●cosmetics, toothpaste, and other cosmetic products ●other industrial chemical products

**Metal Products** ●Western tableware, cutlery, household utensils, and hardware ●heating systems, plumbing parts

**General-Purpose Machinery** ●boiler and power units ●pumps and compressors ●General industrial machinery

**Production-oriented Machinery** ●agricultural machinery (excluding agricultural implements) ●construction equipment and mining machinery ●textile machinery ●machinery for industries related to living ●machinery for basic industrial materials ●metal forming machinery ●semiconductors, flat-panel display manufacturing systems

**Business Oriented Machinery** ●office machinery ●equipment for service and entertainment ●measuring equipment and instruments, analytical instruments, measuring machinery, laboratory instruments and appliances ●medical equipment and medical-use products ●arms

**Parts for Electronic Equipment, Electronic Devices, Electronic Circuit** ●electronic devices ●parts for electronic equipment ●storage media ●electronic circuits ●module parts ●other parts for electronic equipment, electronic devices, and electronic circuits

**Electric Appliances** ●electric appliances for power generation and transmission ●industrial electric appliances ●consumer electric appliances ●electric lamps and light fixtures ●electric cells and batteries ●associated electronic equipment ●electric measuring instruments ●other electric appliances

**Information and Communication Electronics Equipment** ●communication equipment and related equipment ●audio visual systems ●electronic computers and accessories

**Others** ●personal ornamentation, accessories, buttons and related products (excluding precious metals and jewelry)

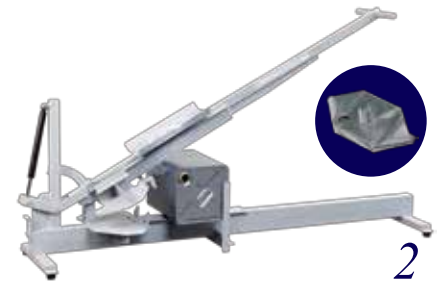
45%  
Products

Chemical Products	1.5%
Metal Products	3.6%
General-Purpose Machinery	11.7%
Production-oriented Machinery	43.2%
Business Oriented Machinery	10.8%
Parts for Electronic Equipment, Electronic Devices, Electronic Circuit	6.3%
Electric Appliances	18.7%
Information and Communication Electronics Equipment	4%
Others	0.2%





# Create a new value that can contribute to society



## 1 Design and Production of Plant Factory

Making utmost efforts in manufacturing basic agricultural equipment that contributes to safe and stable agricultural business.

## 2 18-liter Square Can Crushing Machine (Manual Type)

By crushing cans with this machine, industrial waste turns into valuable scrap. It works well at sites that need to crush from 100 to 500 cans per month.

## 3 Paints with High Solar Reflectance

Having more than 60% solar reflectance even with dark colors like black, it brings remarkable power savings.

## 4 Air purifiers for smoking lounges

A new type of equipment utilizing a technology that catalytic activities are combined with plasma excitation (PACT®) to perform one-pass dissolution and deodorization of gases, enabling disposal indoors.

## 5 Non-lubrication type/ small piston type vacuum pump/ compressor

Success in miniaturization and electric power saving by employing DC-driven brushless motors developed by the company itself

## 6 Packtest®

Syringe-type, easy-to-use water analytical instruments (61 kinds in total). In most cases, analysis results are displayed within five minutes.

## 7 Skyshower

Natural lighting system that makes a whole-room well-lit with sunlight.

## Products equipped with advanced functionality

Just as new ideals are developed from accumulated wisdom, companies in Ota City are propelling themselves forward at top speed to take manufacturing to the next level with their outstanding manufacturing technologies and capability to practically apply them in the field.



Meet reliable manufacturers and processors you need

# Collaboration System

The best company  
to collaborate  
will be introduced to you from  
our database of  
about 4,000 companies.

The small and mid-size companies in Ota City have exceptional technologies. Most of them are strong in research and development as well as product development. They are hard working and have a wealth of experience satisfying the challenging requirements of a wide variety of companies through their technical skills. For those who are looking for partners for specific types of work and manufacturing, Ota's system of collaboration will introduce you an ideal company. We will appropriately evaluate and recommend a company that properly matches all your requirements.

## The flow of business from consultation to a start of transactions



**Consultation  
with an expert  
consultant**

Please contact by one of the following methods. Four expert consultants are available for you at all times.

Note: Your work drawings will be very useful for this consultation



**Introduction  
of the optimal match  
for your company**

Using the database prepared by Tokyo Metropolitan Small Business Center and latest information obtained by a regular visit, we can introduce a partner who is the optimal fit to your requirements.



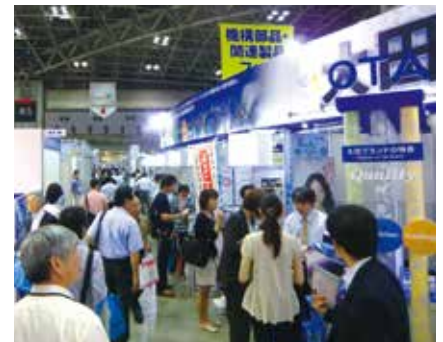
**Direct business  
negotiations**

You can start direct business negotiations with the company introduced by our expert consultants. After the business negotiations are concluded, business transactions are started. The technical skills of Ota City can precisely meet your requirements.

## Meet optimal partners across Japan and around the world

You can meet the excellent companies of Ota City face-to-face at large exhibitions held at Tokyo Big Sight and Intex Osaka in Japan, and also at exhibitions in China, Thailand, Germany, and other countries.

In addition, we are always there and ready to provide you with the company information in accordance with your requirements.



The Ota City office is about three minutes on foot from the east exit of Keikyu Kamata Station of Keikyu Line or Keikyu Airport Line.



### Contact

Phone

**81-3-3733-6404**

Fax

**81-3-3733-6496**

E-mail

**kaigai@pio-ota.jp**

Visit  
in person

Please come to our consultation desk on the second floor of the Ota City Industrial Plaza (PiO).



**Ota City Industrial Promotion Organization**

1-20-20 Minamikamata, Ota City, Tokyo 144-0035, Japan TEL.81 (0)3-3733-6404 FAX.81 (0)3-3733-6496 <http://www.pio-ota.jp>